

How To Pack For Your Move

Country Picker packing experts give you some tips.

Packing many or all of your items can help you save money on the total cost of your move. By reviewing the tips and guidelines contained in this brochure, you can learn how to properly and safely pack your goods. These packing tips are taken directly from suggestions made by experienced packers.

Here are a few things to remember if you choose to pack your own goods:

- The Country Picker, like any other van line, has the right to inspect packed-by-owner (PBO) items to ensure they are sufficiently packed to protect your goods.
- If, in the carrier's judgment, a container is not packed properly, the carrier may ask you to repack it; or The Country Picker will repack the container for you for an additional charge.

Let Us Help

We can assist you by providing suggestions on the use of proper packing materials and containers. He or she also can provide helpful hints for protecting your goods.

Selecting Your Packing Material

When selecting packing material for your goods, remember:

- Use only strong, corrugated cartons with tops or flaps that fold shut.
- Collecting boxes discarded by your local grocery store can save you money.
- Make sure boxes are clean of insects and other pests.
- Save old newspapers for packing material, but be careful – the ink may rub off and stain certain items. We recommend that you use blank newspaper that can be purchased from us.

For a fee, The Country Picker can provide specially made cartons for all your household goods, including mattresses, clothing and mirrors. The added protection of these cartons may help you avoid damage resulting from poor quality packing material.

Other packing supplies you may need to include:

- Plastic bags and labels for parts storage and identification
- Foam peanuts, Styrofoam pellets or "popcorn" for added protection
- Tissue and kraft paper
- Corrugated paper rolls for figurines and fragile items
- Heavy-duty packaging tape (1 1/2 to 2 inches wide) for sealing cartons — The Country Picker does not recommend using duct tape or masking tape
- Markers and labels for identifying contents of cartons
- A notebook and pencil for carton identification log
- Scissors and/or a sharp knife

Before Packing



After you collect your materials, select a work area that is large enough to handle various sizes of cartons. Also, choose a strong table with a protective cover as your work surface. (We recommend that you do not use your good dining room table.) Keep your marking pens, tape and scissors nearby. Spread a neatly stacked, generous amount of packing paper flat on your table.

You're almost ready. Here are a few more suggestions before getting started.

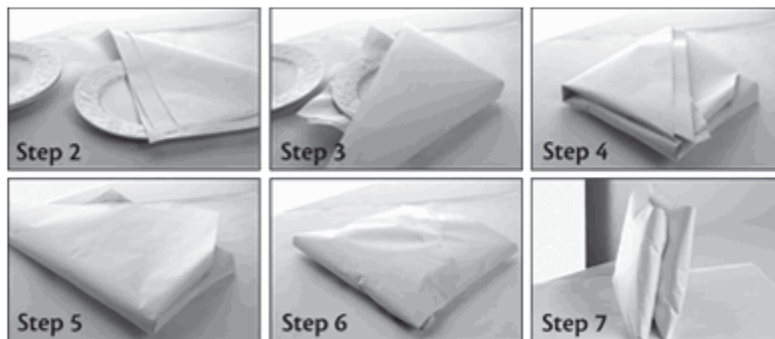
- Items of high value should be packed in the presence of the carrier so that the items are identifiable. If you choose to have the carrier pack items of high value to ensure that they are properly protected, an additional charge will be associated for the service.
- Pack one room at a time; it will help when the time comes to unpack.
- Pack a couple of cartons a day, starting well ahead of the move.
- Mark all boxes with room and box number.
- Keep a carton identification log that shows the number of boxes packed per room and the total number of cartons packed. (For long-distance moves, The Country Picker will provide an official inventory during the loading process).
- Be sure to have plenty of "filling" material available; when in doubt, use more.
- Take extra care to make sure the bottoms of all cartons are secured and will hold the weight of the contents.
- Always pack heavier items toward the bottom of the box and lighter items toward the top. Try not to exceed a weight of 50 pounds per box; it makes moving them a lot easier.
- Remember — the heavier the item, the smaller the carton.

Packing Methods

Once you have prepared your work area and selected a room, you can begin packing. Here are some basic recommendations for packing various items. (More tips are provided under the "Specialized Packing Tips" section of this page.)

Dishware

(See the steps described below.)



1. Select a medium-sized carton (or a mover-provided dishpack) and line the bottom of the carton with crumpled packing paper.
2. With packing paper stacked neatly in place on the work table, center one plate on the paper. Grasp a corner of several sheets and pull the paper over the plate until the plate is completely covered.
3. Stack a second plate on the first and, moving clockwise, grasp another corner of several sheets and pull them over the second plate.
4. Stack a third plate. Grasp the remaining two corners and fold using two sheets, one corner at a time over the plate.
5. Turn the wrapped stack of plates upside down onto your paper.
6. Re-wrap the entire bundle. Start with one corner of packing paper and pull two sheets over the bundle; cover the bundle with the next corner, then the third corner; and finally, the fourth. (Non-fragile plates may be packed five or six to a bundle.)
7. Seal the bundle with packing tape.
8. Place the bundle of dishware in a medium-sized box (or dishpack) so that the plates are standing on edge.

Use this technique on all saucers, bread and butter dishes and other dishware. When packing smaller dishes, you may choose to stack in greater quantities.

Cups

1. Position one cup 6 to 8 inches from one of the corners of your packing paper.
2. Pull the nearest corner of the paper up and over the cup.
3. Nest a second cup directly on top, with the handle to the left (the second cup should "nest" itself in packing paper folded over the bottom cup).
4. Pull the two side corners up and over one at a time and tuck the corners inside the top cup.
5. Hold the bottom and top cups in position and roll the cups to the remaining corner. (Fragile mixing bowls may be rolled in the same manner.)
6. Place cups in a vertical position, lips down, near the top of the box. Do not stack heavy items on top of the cups.

More delicate cups, like china, should be wrapped one at a time. Antique glass or china should be stuffed with crumpled tissue and wrapped one at a time as well.

Glasses and Stemware

1. Before wrapping, stuff glassware and stemware with crumpled tissue or packing paper.
2. Lay glass or stemware on the corner of the packing paper and roll it one or two full rotations (depending on size); pull the sides of the packing paper up and over the glass/stemware and continue rolling to the far corner. Corrugated paper rolls may be used for added protection.
3. Glasses and stemware should be placed toward the top of the box. Heavier items (dishware, pitchers, etc.) should be placed toward the bottom. Very delicate glassware and stemware should be placed in a vertical position, lips down — not on their sides.

As you pack each layer of a box, use crumpled packing paper to assure a snug fit wherever there is a gap. All boxes that contain fragile items should be marked "Fragile." Labels, including "Fragile", "Load Last/Unload First", etc., are provided by The Country Picker.

Specialized Packing Tips



The remaining section of this brochure suggests how individual household items can be better prepared for moving.

There are certain items that The Country Picker will not knowingly transport, including jewelry, coins, stamps and other similar items of high-value. If you include these items in your shipment, The Country Picker may deny any claims for loss or damage to them. We encourage you to transport these items and not include them in the shipment.

The following are additional suggestions for packing common household goods. Remember that the methods for packing dishware, cups, glassware and stemware are fundamental and have similar applications to many other household items.

Appliances and Utensils — Wrap and place small appliances and utensils in sturdy cartons with heavier items on the bottom. Have an authorized serviceman prepare all large appliances (refrigerator, stove, freezer, washer, dryer, etc.) for moving. Be sure to prepare major appliances (defrost, clean and dry as needed) before the carrier's arrival.

Barbeque Grills and Propane Tanks — Wrap grates and briquettes separately in newspaper (or place all briquettes in a grocery bag) and place in a carton. Pad the carton with paper to reduce movement of the contents. Propane tanks will not be accepted — even if they have been "purged" by an authorized gas grill distributor.

Bedding — Fold and pack all pillowcases, sheets, linens, and towels in clean, medium-sized, 3-cube cartons. Pack blankets, quilts and comforters in large, 4.5-cube cartons. Most beds will be disassembled by Atlas and set up in your new home. When requested, mattresses will be placed in special-care cartons by the carrier. You can help protect mattresses by covering them with old sheets or mattress covers.

Books — Pack on edge in small, 1.5-cube cartons. Alternate bindings; however, don't overload cartons. (Remember — try to limit individual carton weight to 50 pounds.)

Canned Goods and Other Non-Frozen Foods — Pack upright in 1.5-cube cartons with no more than 24 to 30 cans per carton. Do not attempt to move perishables. Wrap glass containers and boxed foods individually and pack in small cartons.

Cars and Motorcycles — Cars and motorcycles being shipped on the moving van should be drained nearly empty of fuel. Motorcycle batteries should be disconnected. Automobile antifreeze should be ample to protect against severe cold during the winter months.

China and Glassware — The Country Picker recommends that you pack your delicate china and glassware in carrier-provided dishpacks. Glassware and china cups should be stuffed with tissue. Do not nest unwrapped glasses. Pack plates, platters and saucers on edges and layer with padding between each layer as well as on the top and bottom of the carton. Be sure to label these boxes "Fragile."

Clocks — Remove or secure pendulum in large clocks. Grandfather clocks should be prepared for moving by an expert serviceman.

Clothing — Place clothes on hangers in wardrobe cartons that are available from The Country Picker. Fold and pack other clothing in clean cartons.

DVD Players, CD Players and Turntables — Use original packing materials when available. If original packing materials are not available, refer to the owner's manuals for further information. Wrap DVD players, CD players and turntables with an old blanket and place them upright in the carton. To stabilize the laser on a CD player, replace the transport screws (normally located on the bottom of the unit). For turntables, stabilize the platter to secure the changer and tone arm by tightening screws located on the top of the turntable. Label boxes "Fragile" and "This Side Up."

Drapes and Curtains — Hang drapes over crossbars in wardrobe cartons or fold and pack in clean cartons. Remove curtains from rods; fold and pack in cartons.

DVDs, CDs, Software Discs, Records, Audio Cassette Tapes and Video Tapes — Layer the bottom of a small carton with shredded or crushed paper. Pack DVDs, CDs, software discs, records and audio cassettes in their protective sleeves or cases. If sleeves or cases are not available, wrap the items in tissue paper or plastic wrap to prevent scratching. Stand CDs, software discs and records on edge in cartons (do not lay flat). Brace at both ends using a hardback book or layer pieces of cardboard to provide a snug fit. Audio cassettes and video tapes may be packed vertically or horizontally on layers of shredded or crushed paper. Fill in with paper as needed. Be sure to mark the box "Fragile."

Flammables and Combustibles — Flammable liquids and aerosol cans **must not** be packed. Changes in temperature and pressure can cause them to leak or even explode. For your own protection, know that if you pack these items and they cause damage to your shipment or others, you — not your carrier — will be held liable.

Home Theater Systems, TVs, Surround Sound Systems and Entertainment System Components — It is best to use the original packaging when available. Consult the owner's manual for specific instructions on your equipment.

Lamps and Lampshades — The Country Picker always packs lamps and lamp shades wo you do not to worry about these hard to pack items. If you choose to pack yourself, we are not responsible for damage. Be sure you remove bulbs, harps and shades and roll up the cord. Pack lamps with bedding or wrap separately and place upright in a clean, tissue-lined carton. Wrap harp and finial (decorative knob) with packing paper and tape to the inside wall of the carton that contains the shade. Wrap shades in tissue, not newspaper, and place upright in large, tissue-lined cartons.

Medicines — Seal caps with masking tape. Wrap and pack upright in small cartons. Some prescription drugs, such as insulin, lose their potency if exposed to heat. Check with your pharmacist before transporting them with your shipment. The Country Picker, however, recommends that you carry all medications with you.

Memory Foam and Extra-Thick Mattresses — Memory foam mattresses should be packed, transported and stored laying flat. Do not stand them on end for more than a few minutes as that will cause the mattress layers to separate. The mattresses can be packed in special mattress cartons (available from The Country Picker). Be sure to mark the mattress "Lay Flat — Memory Foam." Extra-thick mattresses can be packed in cartons that are specially made for mattresses thicker than 10 inches. Some king and queen mattresses have built-in hinges that can be folded temporarily for relocation. Note: Mattresses, including these special types, are usually packed by The Country Picker.

Microwave Ovens — Remove all loose articles inside the oven, such as cookware, glass shelves and carousels. Wrap loose articles and place in a separate container. Tape the door shut in an "X"-pattern to protect the glass. Use the original manufacturer's carton if available; if it is not available, follow instructions below for packing "Personal Computers."

Mirrors, Paintings and Pictures — Tell The Country Picker about valuable paintings that require special care. In most cases we will handle the large paintings and mirrors. If you do it your-self, then be sure to wrap small mirrors, pictures, paintings and frames in unprinted newspaper or paper pads and place on edge in cartons or mirror cartons. Never place printed newspaper directly against paintings.



Personal Computers — Pack computer equipment — PCs, scanners, printers, etc. — in original cartons when available. Otherwise, use strong, corrugated cartons and place protective padding on the bottom of the carton. Wrap an old blanket or protective pad around the item and place it in a carton. Place additional padding between the carton and the computer. Wrap cords separately, label them to identify usage and place in a plastic bag away from delicate surfaces. Non-detachable cords also should be wrapped. Place cords between the padded computer and the carton.

Rugs — Leave large rugs to be rolled up by The Country Picker.

Silverware — Wrap each piece in cloth or low-sulfur-content paper to prevent tarnishing. Wrap the silver chest in an old blanket or moving pad to prevent scratching.

Tools and Lawn Equipment — Drain oil and fuel from power tools such as leaf blowers, trimmers and chain saws (do not ship flammables under any circumstances). Pack hand tools in small, strong cartons. Wrap separately if valuable.

Waterbed Mattresses — Drain all water from the waterbed and, grasping the internal baffle system with the external vinyl, fold the mattress 20 inches at a time. Adjust folds to avoid making creases across individual baffles. Consult your owner's manual for special instructions concerning the care and transportation of your mattress. Do not place your mattress in a carton with sharp or pointed objects. Contact us for more information on how to move your waterbed.

Materials That Can Be Purchased From The Country Picker:

Cartons

- **1.5 cube (small)**
Books, magazines, photo albums, canned goods, grain products, hand tools and other heavy items
- **3 cube (medium)**
Small lampshades, small kitchen appliances (toasters, coffee maker, can opener or iron), pots and pans, shoes, hats and small breakables
- **4.5 cube (large)**
Medium lampshades and small or medium kitchen appliances (upright mixer, wok, etc.)
- **6 cube (extra large)**
Large lampshades and other items too large to fit into 4.5-cube cartons
- **Dishpack (china barrel)**
Dinner place settings, stemware, crystal or glassware, figurines, table lamps, vases, small pictures, mirrors and glass shelves
- **Flat Screen TV Carton**
Specially designed carton that provides added protection when transporting a flat screen TV

- **Mirror (2 or 4 section)**
Pictures, artwork, glass tabletops (less than 7 square feet), dresser mirrors or other high-value items
- **Upright Wardrobe**
For garments or floor-to-ceiling drapes
- **Mattress**
Crib, twin, double and queen/king mattresses
- **Miscellaneous**
Pole lamps, golf clubs, fishing rods, rifles or shotguns

Materials Guide

- **Corrugated or Interleaved Sheets**
For placement between dishes, saucers or other flat items and used to construct cylinders for delicate items
- **Tissue Paper**
Stuffing fragile cups and goblets, wrapping delicate figurines or artificial flower arrangements
- **Non-tarnish Paper**
Wrapping silverware, brass and pewter items
- **Brown Kraft Paper**
Wrapping large items such as pictures, mirrors or lamp bases
- **Cushioned Paper**
Used for easily scratched items
- **Wax Paper**
For oil paintings
- **Bubble Pack or Foam Peanuts**
For high-value porcelain figures, model ships or large crystal carvings